



CLOSE UP: THE NEED FOR EXPANSION

Supporting Hertsmere's economy and the UK Film and TV industry to thrive

September 2022

sky studios
ELSTREE

CONTENTS

01 Welcome

- | Letter from Caroline Cooper
- | Overview

02 The need for space

- | The UK Film and High-End TV industry
- | Global demand for studio space
- | Production scale
- | Closing the supply & demand gap

03 Elstree and Borehamwood: the ideal location

- | Film and TV heritage
- | The golden triangle of filmmaking
- | Skilled local workforce
- | Transport connections

04 Sky Studios Elstree today

- | Designed by content makers
- | Sustainability at its heart
- | The current Sky Studios Elstree site

05 The future of Sky Studios Elstree

- | Plans at a glance
- | The design
- | Wet grassland area
- | Permanent backlot

06 Sustainability & green belt

- | Our very special circumstances case
- | Net zero carbon
- | On site operations
- | Our buildings
- | Wildlife, trees and biodiversity

07 Improving local roads and transport plans

- | Road improvements
- | Cycle and foot paths
- | Car share and discounted travel
- | Local shuttle bus

08 Part of the community

- | Jobs for local people
- | Championing local businesses
- | Sky Cares
- | Space for on-site community initiatives
- | A dedicated Sky Up Academy Studios at Elstree
- | Supporting the next generation of young people
- | A new community board

09 Thank you



01

WELCOME

LETTER FROM CAROLINE COOPER



For over a century, the UK has led the world in creating some of the best-loved film and TV for audiences around the globe.

From 'Blackmail' – the first “talkie” produced in Britain in 1929 - through to modern favourites like 'The Crown', 'Star Wars' and 'Paddington'; much of this world-leading content has been produced here in Elstree and Borehamwood.

Back in 2019, when we decided to build our own state-of-the-art film and TV studio, there was only one place we wanted to do this. Today, with Sky Studios Elstree we are able to tap into a wealth of talent, creativity and local businesses across Hertsmere and beyond to produce the best film and TV of tomorrow.

But we want to do more. That's why we are bringing forward proposals, working with our partner Legal & General, to invest further in Hertsmere by adding an additional 10 sound stages to Sky Studios Elstree, along with a new Sky Up Academy Studios to inspire the future generation of talent, creating an additional 2,000 jobs along the way and enabling a further £2bn of new production investment over the first five years of operation.

We've spent the last few months speaking with residents and local community organisations to get their input, and over the next few pages you can see our plans to continue to support Hertsmere's economy and the UK film and TV industry to thrive.

We hope to continue our journey in Hertsmere and if you'd like to discuss opportunities or have any thoughts or feedback please get in touch.



Caroline Cooper,
COO, Sky Studios

WELCOME

Sky Studios Elstree is a new, state-of-the-art film and TV studio based in Borehamwood, Hertfordshire. The current site consists of 13 sound stages set across 27.5 acres, our world-class studio will become home to a range of productions from across the globe.

Developed by Legal & General, in partnership with Sky and sister company NBCUniversal, we have spent the last two years building on site and are now opening our doors to our first production, 'Wicked', the feature film adaptation of the hit musical starring Ariana Grande and Cynthia Erivo.

Investing Further in Hertsmere

The UK is a global destination for Film and High-End TV production, with more and more production investment predicted to come to the UK over the next few years.

With Sky Studios Elstree, we want to continue to attract world-leading productions to the UK and we want them to be made in Hertsmere rather than anywhere else, adding more jobs and boosting the local economy.

We have therefore submitted a planning application to expand Sky Studios Elstree and add 10 new sound stages.

As one of the biggest businesses in Hertsmere, we are committed to supporting our neighbouring community and ensuring the benefits of us being here are felt directly by residents. This means new jobs and training opportunities, but also using local suppliers, minimising our environmental impact, and supporting more initiatives, charities, and projects as a long-term partner.

Read on to find out more about the planning application including details on why productions facilities are in high demand, why Elstree and Borehamwood is the perfect location and the benefits this expansion will bring to the local area.



CGI of Sky Studios Elstree with proposed expansion

WHO WE ARE

Sky and NBCUniversal are part of the Comcast Group, a global media and technology company that connects people to moments that matter. They will be responsible for the majority of the productions that will take up residence at Sky Studios Elstree.

Building on the success of Sky Originals like Chernobyl, Gangs of London and Brassic, Sky are increasing investment in original content through Sky Studios, the company's original programming arm across Europe.

sky studios

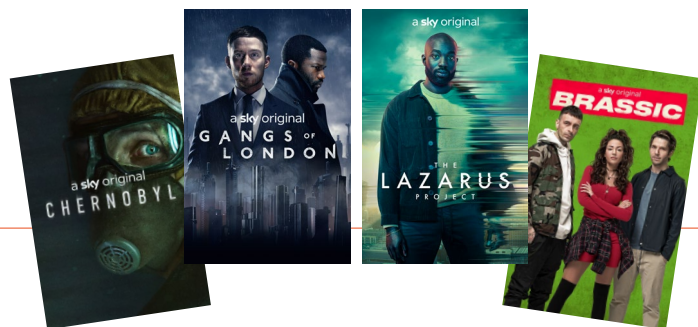
Sky Studios develops, commissions and produces award-winning Sky Originals for Sky's 23m customers and beyond

sky originals

sky atlantic

sky max

sky comedy



NBCUniversal is one of the world's leading media and entertainment companies in the development, production and marketing of entertainment, news and information to a global audience. NBCU create blockbuster films across a portfolio of production companies including DreamWorks, Universal and Focus Features.

NBCUniversal

Feature films and high-end television from a broad portfolio of production companies



**FOCUS
FEATURES**
A COMCAST COMPANY

UCP
UNIVERSAL CONTENT PRODUCTIONS

WORKING TITLE

**UNIVERSAL
TELEVISION**





02

THE NEED FOR SPACE

THE NEED FOR SPACE

Film and TV production is one of Britain's fastest growing sectors.

We've been closely monitoring the demand for production facilities alongside our partners NBCUniversal and it's clear there is an urgent need for more high-quality studio space within the UK, and especially near London.

The UK Film and High-End TV Industry

Film and High-End TV (HETV) are a critical part of the UK's creative economy. British Film Institute (BFI) have reported that 2021 was a record year, with £5.6bn spent in the UK on film and HETV productions. Over 80% of this was funded or co-funded by foreign investors, choosing to make the most of what the UK has to offer, including generous tax relief on production spend.

The UK is already global destination of choice for blockbuster film production, and expanding Sky Studios Elstree will help the UK fulfil its creative potential, enabling a further **£2bn of production investment** over the first five years of operation.

“The UK's film and TV industry continues to experience exceptional growth, generating billions of pounds of investment for the UK economy, and thousands of new jobs. The demand for content has never been greater, requiring suitable additional stage space and opportunities to grow our skilled workforce. The new facilities at Sky Studios Elstree are a welcome addition, as are plans for further expansion, to meet demand now and in the future.”

Adrian Wootton OBE, Chief Executive,
British Film Commission

London is starting to lead as a Film and HETV production hub

Studio facility	Location	>\$100m budget productions (2017-21)
 WARNER BROS.	 London	14
 PINEWOOD	 London	14
 TRILITH	 Atlanta	9
 SHEPPERTON STUDIOS	 London	7
 BLACKHALL STUDIOS	 Atlanta	5
 village roadshow STUDIOS gold coast australia	 Australia	5

Source: Review of the UK Film and HETV production facility market (PwC, June 2022).

Source: Film and other screen sectors production in the UK: Full Year 2021 (BFI, February 2022)



Global demand for studio space

Global investment in film and high-end television, driven by the rise of streaming platforms and competition for viewers, is powering a significant and sustained increase in demand for premium studio facilities. The UK, and the area surrounding London in particular, is considered a highly attractive place to produce Film and HETV.

To better understand the demand and supply of high-quality studio space in the UK, Sky commissioned PwC to undertake a detailed analysis, the full report can be found in our planning application. PwC also estimated that UK spend on Film and HETV production will reach at least **\$8bn by 2027** and that **6.4m sq ft of premium stage space would be required to fulfil this**.

Production scale

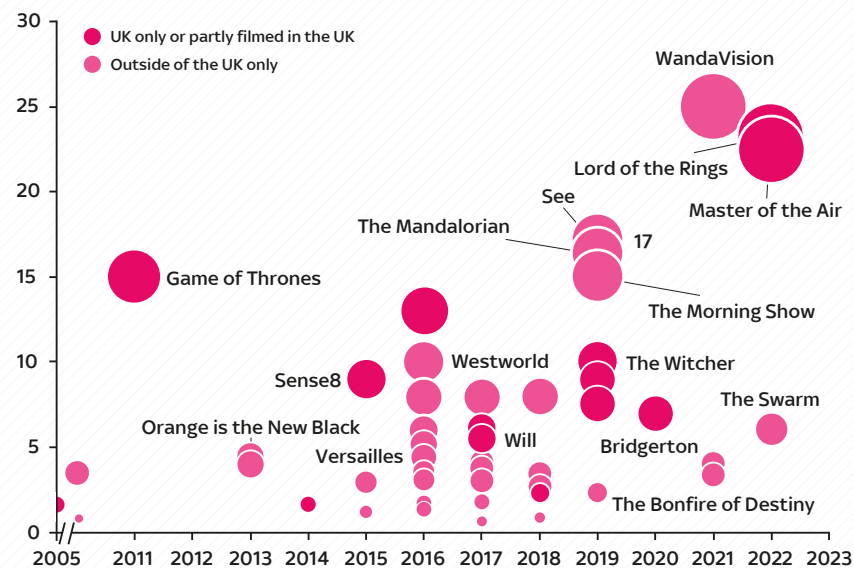
Investment in film and high-end television production is increasing with UK spend expected to grow around 5% a year for the next five years.

Streaming providers are competing both on quantity and quality of shows, with budgets reaching up to \$25m per episode for some high-end television productions such as Disney's 'Wandavision' and Amazon's 'Lord of the Rings'.

As productions get bigger there are a limited number of locations globally that can house these high-end television and feature film productions. They require large sound stages as well as a highly skilled workforce and suppliers.

Budgets are increasing for HETV

Budget per episode (\$m)



Source: Review of the UK Film and HETV production facility market (PwC, June 2022).

Content producers such as Disney and Netflix have recognised this and taken up long-term leases at Pinewood and Shepperton respectively to guarantee space for their productions.

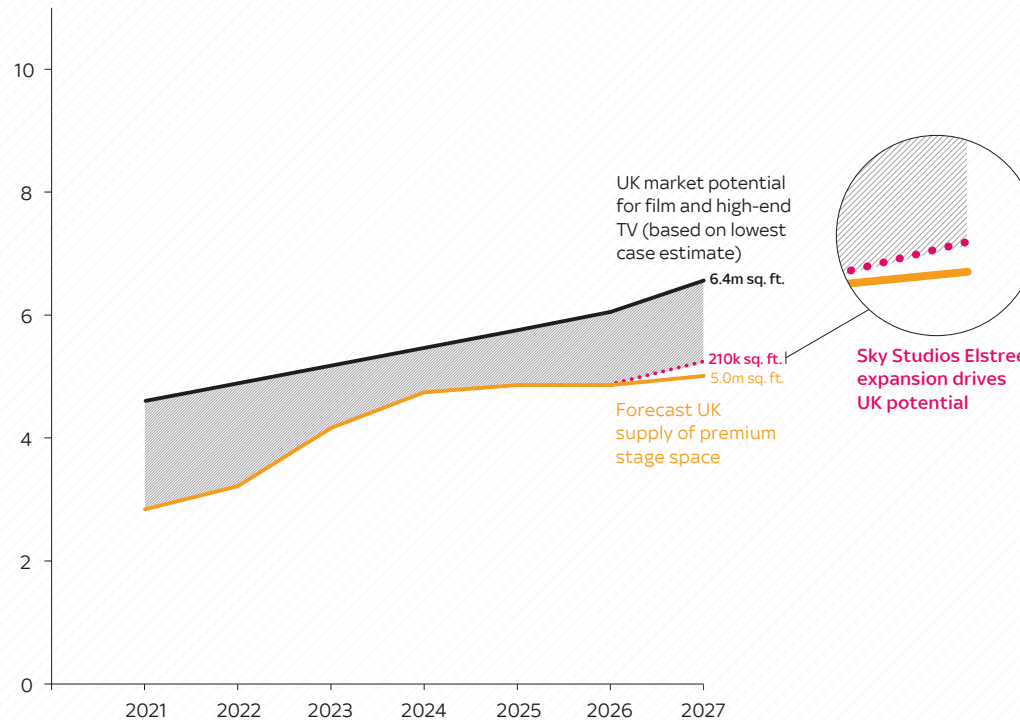
Sky Studios Elstree will allow us to create capacity for this increasing demand from across the industry. We anticipate that our stages will be taken up predominately by Sky and NBCUniversal productions, whilst also being able to support external productions when space becomes available. This allows us to continue to meet our content ambitions and contribute to the cultural economy.

Sky Studios Elstree - closing the supply & demand gap

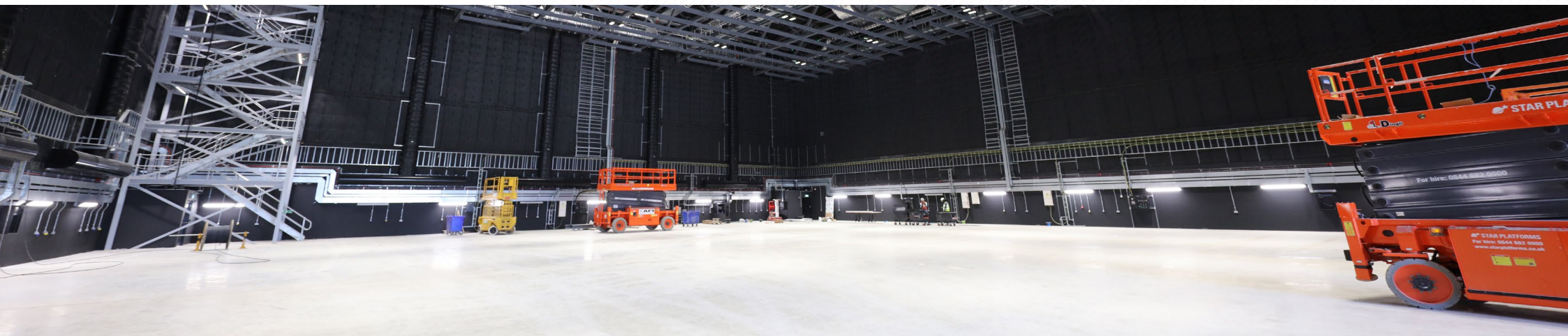
The PwC analysis estimates that there will be a supply deficit of at least 1.4m sq. ft. of premium stage space in the UK by 2027.

The expansion of Sky Studios Elstree will go some way to addressing this supply deficit, contributing an additional 210k sq. ft. of top tier studio space to the UK studio landscape. This will help bring the UK closer to fulfilling its potential for inward production investment and solidify its position as a leading global location for high-end content production.

Proposed expansion contributes to reducing supply deficit



Source: Review of the UK Film and HETV production facility market (PwC, June 2022).





03

ELSTREE AND

BOREHAMWOOD:

THE IDEAL LOCATION

ELSTREE AND BOREHAMWOOD: THE IDEAL LOCATION

Elstree and Borehamwood have a strong history in British film and TV, hosting legendary productions from 'Star Wars' to 'The Crown', 'Indiana Jones' and 'Paddington'. It is a prime location for productions with national and international travel links and a highly skilled local workforce, making it accessible and desirable.

Film and TV heritage

Elstree and Borehamwood have been hosting film and TV productions for over 100 years. The area has one of the longest and richest histories of supplying our screens with TV and film that the nation and the world loves. We're proud to be part of this flourishing industry and community and we hope to be part of the next chapter of this story.

The Golden Triangle of Filmmaking

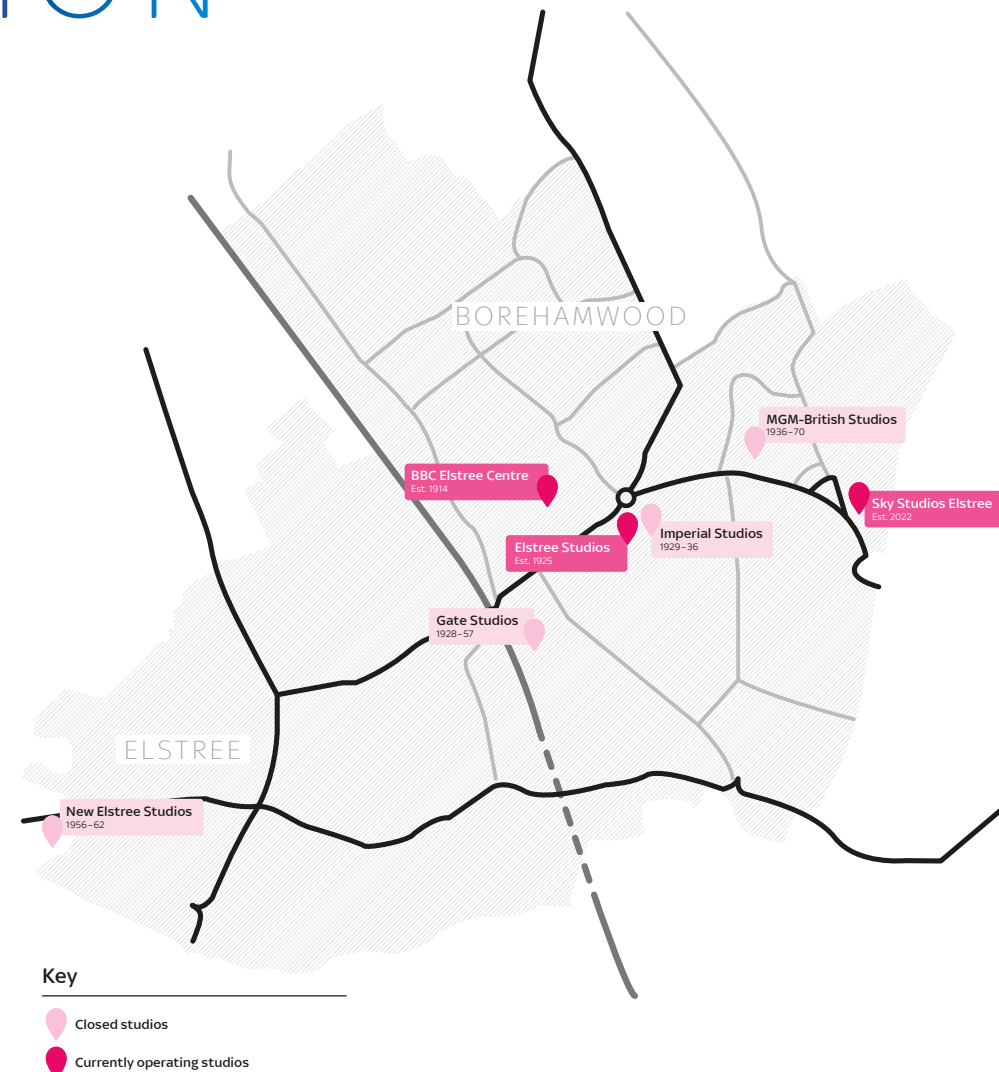
Hertfordshire's golden triangle of filmmaking exists between Sky Studios Elstree, Elstree Studios and Warner Bros Studios Leavesden. This triangle is part of a well-established network of top-tier production facilities all located in an arc to the West and North of London. This Greater West London 'cluster' is responsible for the production of all of the \$100m+ budget productions in the UK over the last five years. There are clear benefits from locating a studio within this cluster, including a high concentration of skilled labour, easy access to suppliers, and knowledge sharing.

Skilled local workforce

Hertfordshire has an incredibly rich pool of talent from set builders, lighting and rigging to operations and client services. TV and film production is at the heart of the community and many generations of local families have worked within the industry. By expanding Sky Studios Elstree, we expect to support the creation of around 2,000 new jobs across Hertfordshire. This is on top of the 2,000 new jobs already in plan for the existing site across the construction and operational stages.

Transport connections

Elstree and Borehamwood are on the outskirts of London and benefit from strong transport connections, both nationally by road and rail, and internationally with four airports within easy reach. The proximity to London, one of the world's most visited cities, also makes it easy to attract top international talent to productions.





04

SKY STUDIOS ELSTREE TODAY

SKY STUDIOS ELSTREE TODAY

Sky Studios Elstree is being developed in partnership with NBCUniversal and will become a new creative home for the best British, European and global talent.

Designed by content makers

With 13 sound stages starting at 10,000 sq. ft., production offices, screening rooms and the latest technology on tap, we've designed the current studios from scratch to the highest standards. More recently we've added a temporary backlot space for production activities including storage, set building and a place for catering & talent trailers and we're renting two warehouses on a nearby site. Both have been added due to the increasing scale and demand from productions.

Sustainability at its heart

Sustainability is at the heart of all the plans. That means solar panels on every roof, electric vehicles for our operations, LED lighting across the site and harvesting rainwater. In April, we helped to launch a new studio sustainability scorecard with albert – an environmental organisation working with film and TV to reduce waste, carbon footprint and encourage sustainability – to measure and quantify our impact properly and we'll be using this to hold ourselves accountable once we're fully operational.

Over the last few years we've been building the site with our construction partner BAM. We've now welcomed our first production, 'Wicked', who are setting up across a couple of our sound stages as they prepare to start filming.

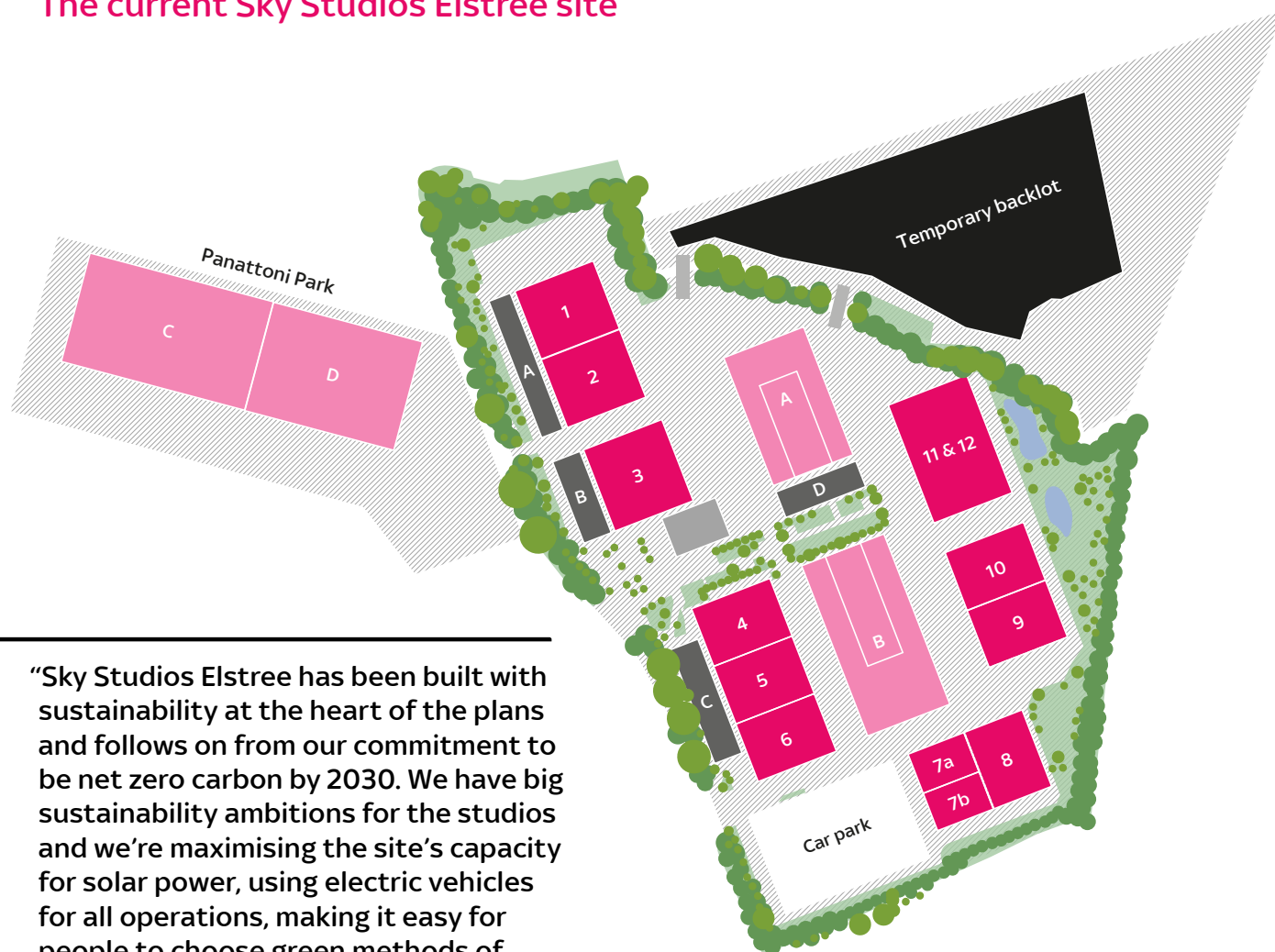


“We are thrilled to have our first feature film, ‘Wicked’, in production here, with filming to commence in the coming months!”

Noel Tovey, Managing Director,
Sky Studios Elstree

Tree planting outside the current site

The current Sky Studios Elstree site



“Sky Studios Elstree has been built with sustainability at the heart of the plans and follows on from our commitment to be net zero carbon by 2030. We have big sustainability ambitions for the studios and we’re maximising the site’s capacity for solar power, using electric vehicles for all operations, making it easy for people to choose green methods of transport to get to site and much, much more.”

Fiona Ball, Group Director Bigger Picture,
Sky

Sound stages

Varying from 10k sq. ft. to 30k sq. ft. and reaching over 15m internal height, these are the buildings where productions film. They can hold sets, green screens and even virtual production. All our sound stages have a very high acoustic rating so that when the doors are closed no noise can get in, or out.

Workshops

The bulk of work on films goes on behind the scenes: from set build to special effects, props, costume and even growing plants. This activity will take place in the workshops which are tailored to the specific needs of the production.

Production offices

Films and high-end television productions are projects of considerable size and budget, and there are large teams of production staff employed to ensure the production stays on track and meets its creative goals. These teams will use this dedicated office space.

Ancillary space

This is where we will base our studio operations team who are responsible for the day-to-day running of the site. They work with productions to make sure the site meets their needs. This space also contains a café and screening rooms.

Temporary backlot

Outdoor space for storage, housing cast and crew trailers and other production activities, including limited outdoor filming. We have temporary planning permission for this space for a period of three years.



05

THE FUTURE OF SKY STUDIOS ELSTREE

THE FUTURE OF SKY STUDIOS ELSTREE

We want to create one of the world's leading studios here by adding 10 new sound stages, allowing us to attract even more film makers and world-class productions to Hertfordshire.

Over the last few months, we've spoken to members of the community and shaped the plans further to meet the need of the community as well as the productions that will use the site.

"Sky Studios Elstree is a perfect example of Legal & General's approach to supporting projects that deliver regional growth, create local value and invest in the skills, training and economy of tomorrow. We are proud to be collaborating with Sky on the proposed expansion of Sky Studios Elstree to further support growth in the UK's creative industries."

Gordon Aitchison, Director,
Investment & Development at LGIM Real Assets

Proposed North site

Sound stages

Backlot

Workshops

Wet Grassland

Production Offices

Ancillary Space



We have commissioned a team of experts, including specialist architects, ecologists, sustainability engineers, landscape engineers and acousticians to work with us on the designs for Sky Studios Elstree North.

The planning application proposes to add 10 sound stages, totalling 210k sq. ft. space, plus more workshop, production office and ancillary space. By placing the site directly next to the current 13 sound stages the plans will minimise any impact on the surrounding area such as traffic, knit seamlessly into the buildings currently under construction, and provide the best possible operational layout so that we can continue to attract world-class productions to Borehamwood and Elstree.



The design

The design, materials and colour of the new studios will match those currently at Sky Studios Elstree. We're using the very best technology, with sound proofing so efficient that you could rev a Harley Davidson inside one of our sound stages and not hear a thing outside – helping to protect our surrounding community from noise. We are exploring a living wall on the outside of our car park to help it blend in with the surroundings.



A wet grassland area

You'll see that as part of the footprint of the proposed site, almost quarter will be landscaped, providing a home for local wildlife and outdoor space for those visiting and working on the site to enjoy. A key part of our proposals is a large area of wet grassland and woodland to the south, as well as bird and bat boxes throughout the development.



A permanent backlot

Whilst building our current sound stages, we have seen demand from productions of a bigger scale than we originally expected. With that in mind, the expansion includes a permanent backlot so that productions have everything they need in one place. This would be used for production operations such as setting up catering vans, talent trailers and building sets alongside potential outdoor filming.





06
SUSTAINABILITY
& GREEN BELT

SUSTAINABILITY & GREEN BELT

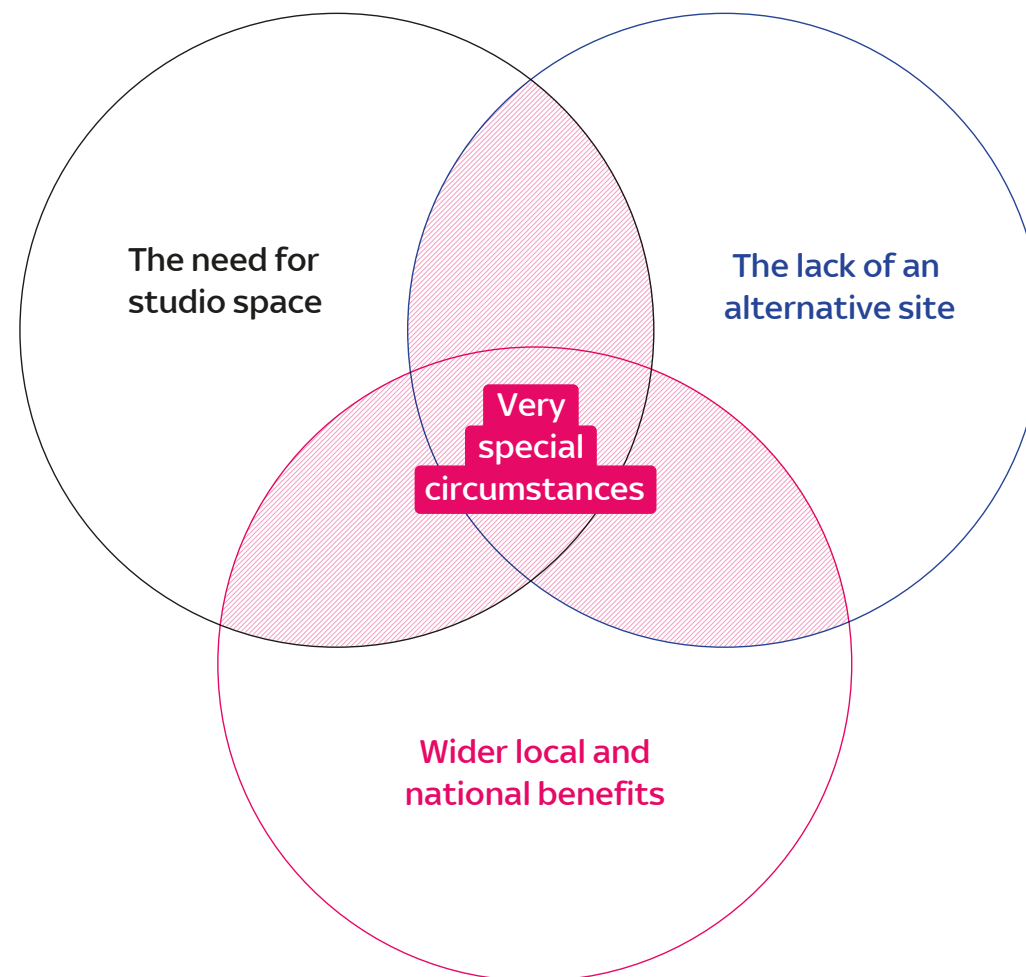
We believe that there is a strong 'very special circumstances' case for this proposed expansion into green belt which includes:

- The need for high quality studio space at national, regional and local levels
- The lack of an alternative site on which to expand and create a comprehensive film and TV production facility
- The significant wider benefits the development will bring to the local area and nationally, including investment and job creation

The full very special circumstances case is outlined in our planning statement.

We've performed detailed non-invasive surveys which showed there are no protected species living on site and our design team has worked to retain as much grassland and hedgerows as possible. Because of this a quarter of our Sky Studios Elstree North site will be landscaped and this includes a large wet grassland and woodland area and a living wall on our car park.

We will also follow the same sustainability principles from our current site and have put in a number of other measures across Sky Studios Elstree.





Net zero carbon

Sky prides itself on being an industry leader in tackling the climate crisis. As an organisation, Sky has been carbon neutral since 2006, with an ambition to become fully net zero carbon across its supply chain by 2030. We have the same bold ambition for Sky Studios Elstree and last year we partnered with industry body 'albert' to create the Studio Sustainability Scorecard, so we can monitor our progress against this goal and help drive up sustainable practices across the wider global studio ecosystem.



On site operations

As with our current 13 sound stages, the expansion will use only renewable electricity, a significant portion of which will be generated by over 15,000 sqm photovoltaic panels on the roofs of buildings, with any additional energy coming from a renewable source. We will have a fleet of electric buggies for logistics, harvest rainwater for recycling and we'll encourage sustainable transport methods to site by providing hundreds of cycle and electric vehicle parking spaces, and running an electric shuttle bus to nearby public transport stations.



Our buildings

The buildings themselves will also be incredibly important - the materials, how they're constructed and operated have all been considered. The development has been designed based on sustainable design and construction principles and will be built to meet the UK Green Building Council Net Zero Carbon Standard. We will also be targeting BREEAM Excellent ratings which certifies the sustainability standard for all buildings.



Wildlife, trees and biodiversity

We've also considered how we can minimise the impact of the development on local wildlife. We will be planting hundreds of new native and non-native, climate resilient trees and plants, reinforcing existing hedgerow habitats, and introducing bird and bat boxes. A large area to the south of site will be dedicated to a wet grassland, which will be undisturbed by production activity. In addition to these measures, we will be making a significant financial contribution to fund local nature enhancements that will lead to a biodiversity net gain of 10% versus the existing state of the site.



“We’ve worked closely with the team at Sky Studios Elstree to develop the sustainability standard which will hold studios across the world to account for green practices.”

Steve Smith, Sustainable Studio Standard Project Manager, albert



07
IMPROVING
LOCAL ROADS AND
TRANSPORT PLANS

IMPROVING LOCAL ROADS AND TRANSPORT PLANS

Over the past two years, we have implemented approximately £2.7m worth of highway improvements for the existing Sky Studios Elstree site.

These improvements will also serve the needs of the expansion plans; however, we know that transport will remain a concern for some local people. That's why we are proposing to go above and beyond to minimise traffic impact on local roads and improve sustainability by encouraging alternative transport options to driving.

Road improvements

We've undertaken detailed modelling which shows that the previous road improvements we made will accommodate the additional traffic generated by the north site. However, the modelling did flag that there could be increased queuing on the Newark Green roundabout, so we are proposing a set of measures to mitigate this, including adding a third lane to the roundabout, reducing the speed limit on the A1 slip road and introducing keep clear markings.

Cycle and footpaths

Through this planning application we will contribute towards new cycle and pedestrian routes within Borehamwood and to extending the cycle hire scheme from the local station to the site. We will also create a new crossing point for pedestrians and cyclists at the site access.

Car share and discounted travel

To encourage those coming onto site to use alternate methods of transport we will also set up a car sharing club with priority parking spaces for club members, alongside offering season ticket loans to staff using public transport.

Local shuttle bus

We are proposing an extension of the free shuttle bus service to include an additional bus to Elstree & Borehamwood Station. The shuttle bus service will also be made available to members of the public during certain times of the day and additional stops will be considered depending on resident demand. A free shuttle bus service for site occupants and visitors will also be offered to Potters Bar Station and Stanmore Station.



Sky studios Elstree electric shuttle bus design



Supporting people to cycle to site



08

PART OF THE
COMMUNITY

PART OF THE COMMUNITY

As a long-term local partner, we are committed to supporting the local community to thrive. This not only includes new jobs and training opportunities, but also using local suppliers, working with charities and schools and welcoming the community onto our site.



Jobs for local people

Our site operations team for the existing Sky Studios Elstree facility consists of around 100 roles and we are currently around halfway through recruitment. So far, a significant proportion of those recruited live within a five-mile radius of our site and over 60% live within 10-mile radius. We estimate that we'll need to roughly double the team to operate the proposed expansion and we will target the same high level of local employment for these.



Through the construction of our existing site, BAM, our contractor, has created **over 600 roles with approximately four out of five of these having been recruited locally**. We're also pleased to have worked with Borehamwood Job Centre Plus to **place 33 people on site who were previously not in employment, education, or training, alongside 40 apprentices and 34 work placement students**.

The first production on site, 'Wicked', has begun to recruit production roles and we are working closely with them to ensure they focus their search for key roles with local talent, an approach we will actively support all our productions to adopt. We've also hired a Talent Manager to support us identify local talent for all operational roles within our teams. As we continue recruitment all operational roles will be advertised through our Sky Careers website or through our facilities management partner Mitie.

The above all relates to our current site. Through the proposed expansion, Sky Studios Elstree North, we expect to support the creation of 2,000 additional new jobs locally through construction and when the site opens for productions. The full extent of the expected economic impact of the development is detailed in a report we commissioned by Oxford Economics, which is included in the planning submission.

We will follow the same principles for the expansion and have worked with specialist consultants Resource Productions CIC to build a comprehensive employment and skills framework that identifies some of the challenges of the media industry before and outlines a proposed strategy for how we can work with local talent and businesses to maximise their opportunities to work in the industry. This can also be found as part of our planning application.

Sky Studios Elstree Employment and Skills Strategy

- 1 Enhance programmes for local young people
- 2 Build on adult pilot programmes
- 3 Address local skills gaps
- 4 Explore apprenticeships and traineeships
- 5 Influence local courses & curriculum
- 6 Empower local suppliers
- 7 Develop local film infrastructure

Source: Sky Studios Elstree Employment and Skills Framework, Resource Productions CIC, August, 2022

“We’ve already started hiring local talent for a number of roles and I’m excited to meet our ambitions to hire more diverse, local talent for roles across Sky Studios Elstree”

Lauren Christy, Talent Manager,
Sky Studios Elstree



Championing local businesses

We are supporting the local economy by working with local suppliers across a range of categories, from signage to catering to office furniture with partnerships varying from smaller, one-off contracts to seven figure contracts of significant scale.

We are building a local suppliers list which will include everything from taxi companies to local shops and hardware stores. This list will be shared with productions when they are working at Sky Studios Elstree to encourage further spend with local businesses.

We are fortunate to be located in Hertsmere where there is a wealth of business who are able to support our operations and delivery of the new studios. We are also proud to be patrons of the Hertfordshire Chamber of Commerce where we have held multiple 'Meet the supplier' events which have led to the fruitful partnerships we have today.

As well as supporting the local economy, the proposed expansion of Sky Studios Elstree will enable a further £2bn of production investment over the first five years of operation.



Sky Cares

Throughout our consultation process, we asked local residents to suggest charities we should look to partner with in the future. We've shared these with our Sky Cares team, and have now successfully onboarded our first charity, Gratitude. Located just a 10-minute walk from Sky Studios Elstree, we're helping Gratitude fight hunger and food waste through donations, volunteers, a special Christmas campaign and by naming them a Sky Up Hub which provides free public wifi to them and their beneficiaries.

We're in the process of onboarding more local charities and we're also working with a number of environmental charities such as The Conservation Volunteers, Planet Patrol and the Marine Conservation Society to see what specific green schemes we can work with them on in the area. We have already planted 500 trees in the local Parkfields & Allum Lane Spinney, and we're excited to explore more initiatives over the next few months and years to come.



Space for on-site community initiatives

As part of the planning application, we have included a new space on-site for community initiatives. A number of potential options emerged as part of our consultation process, which we are now exploring alongside interested parties and community members. Ideas under consideration include the possibility of office space for local industry businesses or a new, publicly accessible archive and museum to celebrate the rich screen heritage of Elstree and Borehamwood. We hope to continue to shape these ideas with the community over the next couple of months.



A dedicated Sky Up Academy Studios at Elstree

Through the expansion we will deliver a Sky Up Academy Studios at Elstree. This will build on the success we've had with our Academy programme elsewhere in the UK.

Sky Up Academy Studios at Elstree will be a real-life, working studio that gives students a taste of life in production. Open to young people between the ages of 14 and 18, the curriculum-linked initiative will provide insight into the range of roles available in production and the skills needed to be successful in a production career.

We've already ringfenced a number of sessions in our Osterley campus which we have offered to schools in Elstree and Borehamwood for the new academic year.



Members of the Content Academy at our Osterley Campus



Supporting the next generation of young talent

In addition to Sky Up Academy Studios over the last three years we've offered placements, mentored, and trained young people and focused on employing locally. This has already meant:

Partnering with Elstree Screen Arts Academy to mentor students in a documentary partnership as well as offering students summer placements on set.

Creating 12 new roles as part of our Content Academy aimed at launching young people into a career in film and TV.

Launching a ground-breaking traineeship programme through our sister company, NBCUniversal, in collaboration with The Mayor of London and Film London. The traineeships will give underrepresented young people the opportunity to work behind-the camera on high-end NBCU productions, including 'Wicked, the first production to film at Sky Studios Elstree.

Running a competition for students local to Sky Studios Elstree in 2021. We challenged them to create Sustainability Heroes to inspire positive change for the planet. From over 1,500 entries, Vaidehi Sonigra from Howe Dell Primary School, Hatfield, was selected as the winner, and her story turned into a short animation, courtesy of DreamWorks, Sky's sister company.

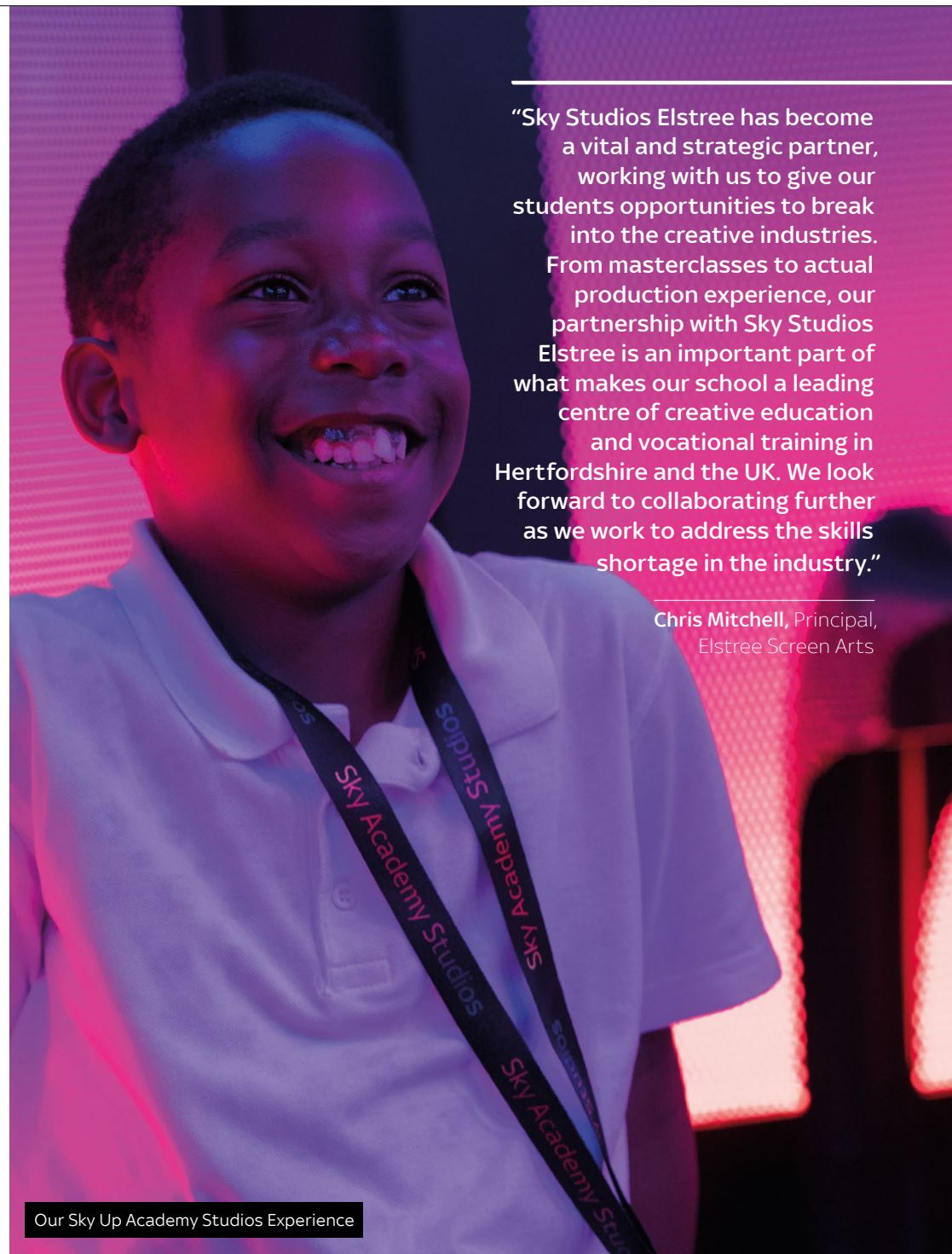
Working with construction partner BAM we've welcomed numerous local schools and teachers onto site during the build so that they can learn more about the construction industry and possible roles both now and when the site opens. Plus we've run talks and apprenticeship assessment workshops at local schools.

This is work that will continue through the expansion of Sky Studios Elstree and we would look to expand the remit of these programmes.



A new community board

We know good communication with our neighbours is key, so we have committed to setting up a new community board. This will consist of representatives from different local organisations and act as an advisory board to continue to help shape our thinking. One of our first priorities will be the new community space which we want to co-design to ensure the final result truly benefits local people.



“Sky Studios Elstree has become a vital and strategic partner, working with us to give our students opportunities to break into the creative industries. From masterclasses to actual production experience, our partnership with Sky Studios Elstree is an important part of what makes our school a leading centre of creative education and vocational training in Hertfordshire and the UK. We look forward to collaborating further as we work to address the skills shortage in the industry.”

Chris Mitchell, Principal,
Elstree Screen Arts



09

THANK YOU

THANK YOU

Thank you for taking the time to learn more about our planning application to expand Sky Studios Elstree. We are passionate about creating a studio that works not only for the productions that will use it, but also for the environment and the surrounding community.


You can see specific documents with more detail in our planning application on the Hertsmere Borough Council planning portal. We've also published a summary of our consultation and some FAQs on our website skystudioselstreenorth.co.uk

If you have any thoughts on our plans or questions then you can still get in touch with us with any questions via email info@skystudioselstreenorth.co.uk and freephone 0800 096 6139.



 skystudioselstreenorth.co.uk

 info@skystudioselstreenorth.co.uk

 freephone 0800 096 6139

